

MONTHLY MEMBERSHIP PROGRESS REPORT

District 11 B2

Results as of: 6/30/2024

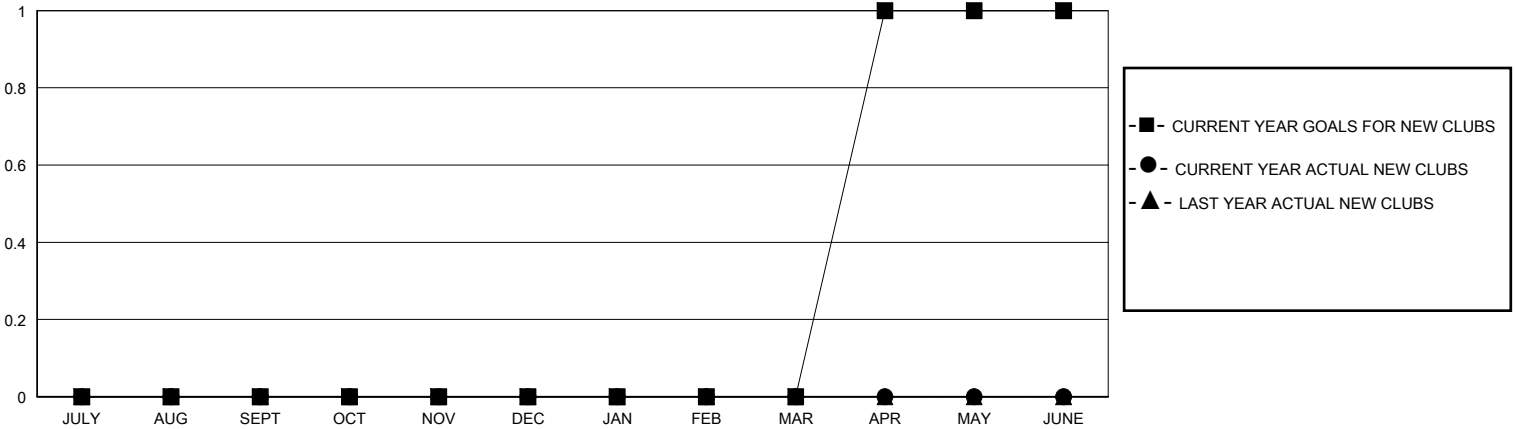
GMT:

LOCATION MICHIGAN

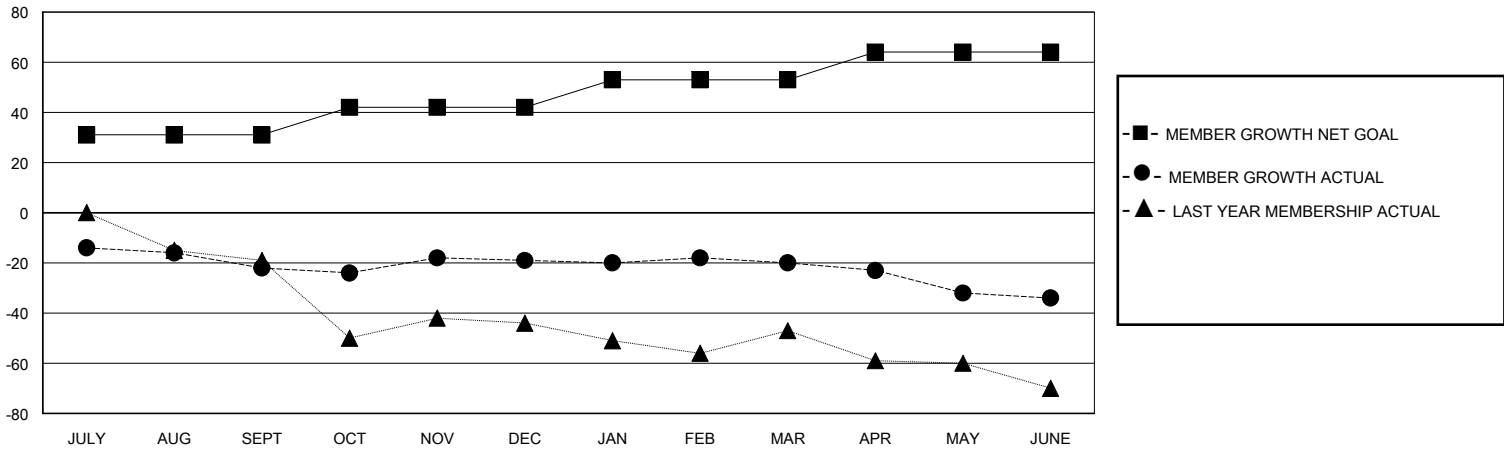
GMT CA

Clubs				Members			
RESULTS FOR 2023-2024				RESULTS FOR 2023-2024			
QUARTER	NEW CLUB GOAL	NEW CLUBS	DROPPED CLUBS	QUARTER	MEMBER GROWTH NET GOAL	MEMBER GROWTH ACTUAL	DROPPED MEMBERS ACTUAL (including transfers)
JULY/AUG/SEPT	0	0	2	JULY/AUG/SEPT	31	17	37
OCT/NOV/DEC	0	0	0	OCT/NOV/DEC	11	20	16
JAN/FEB/MAR	0	0	0	JAN/FEB/MAR	11	12	12
APR/MAY/JUNE	1	0	0	APR/MAY/JUNE	11	13	26

GOALS AND ACTUAL NEW CLUBS CUMULATIVE



GOALS AND ACTUAL MEMBERS CUMULATIVE



DROPPED CLUBS: 2	21 CLUBS OF 33 ADDED 1 OR MORE NEW MEMBERS	GENDER DISTRIBUTION MALE 514 (64.01%) FEMALE 288 (35.87%)
DROPPED MEMBERS DECEASED 19 CLUB CANCELLED 0 OTHER 72 TOTAL 91	CLICK HERE FOR CUMULATIVE MEMBERSHIP DATA	TOTAL FAMILY UNIT MEMBERS 199 FAMILY MEMBERS PAYING HALF DUES 100